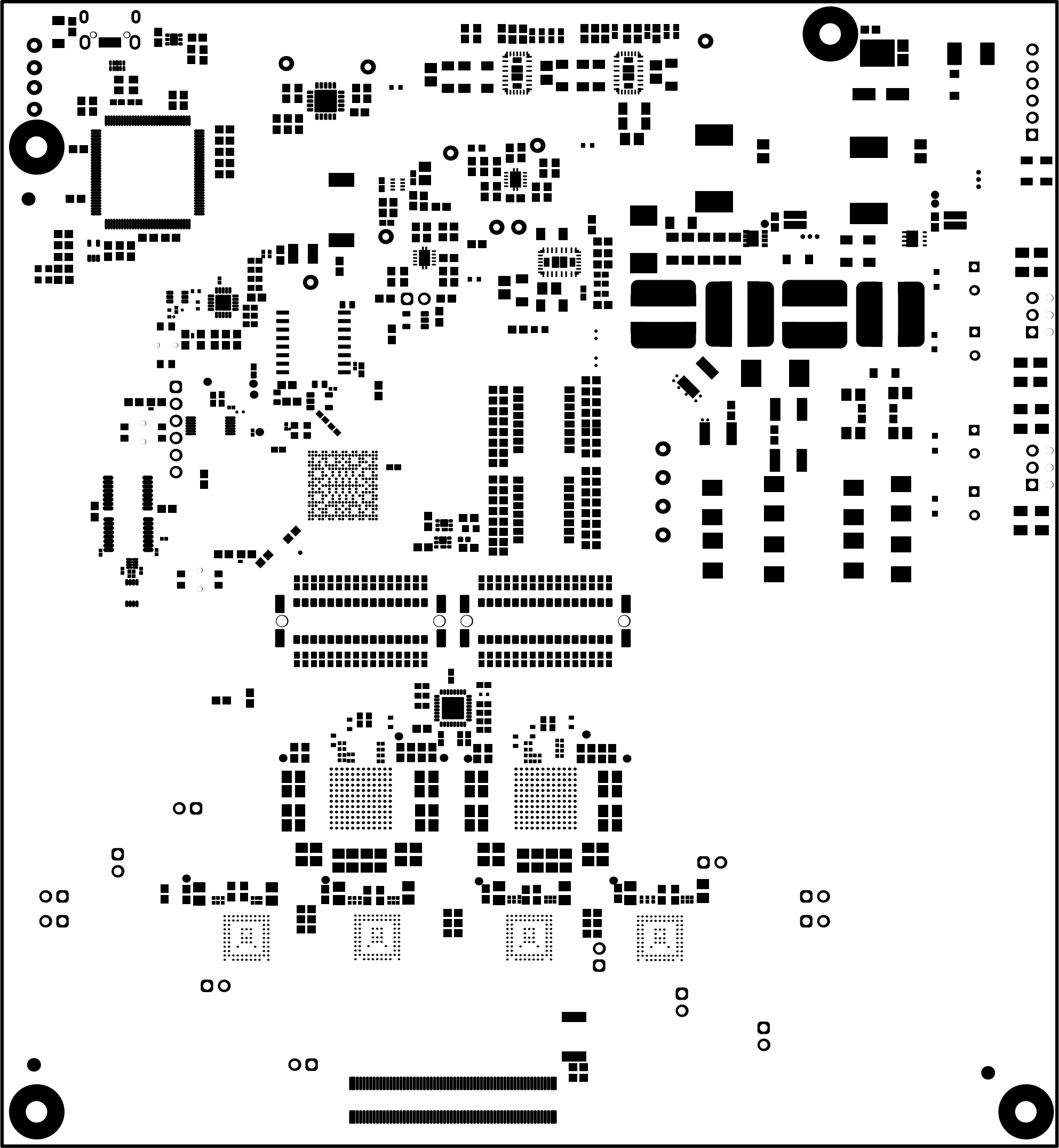
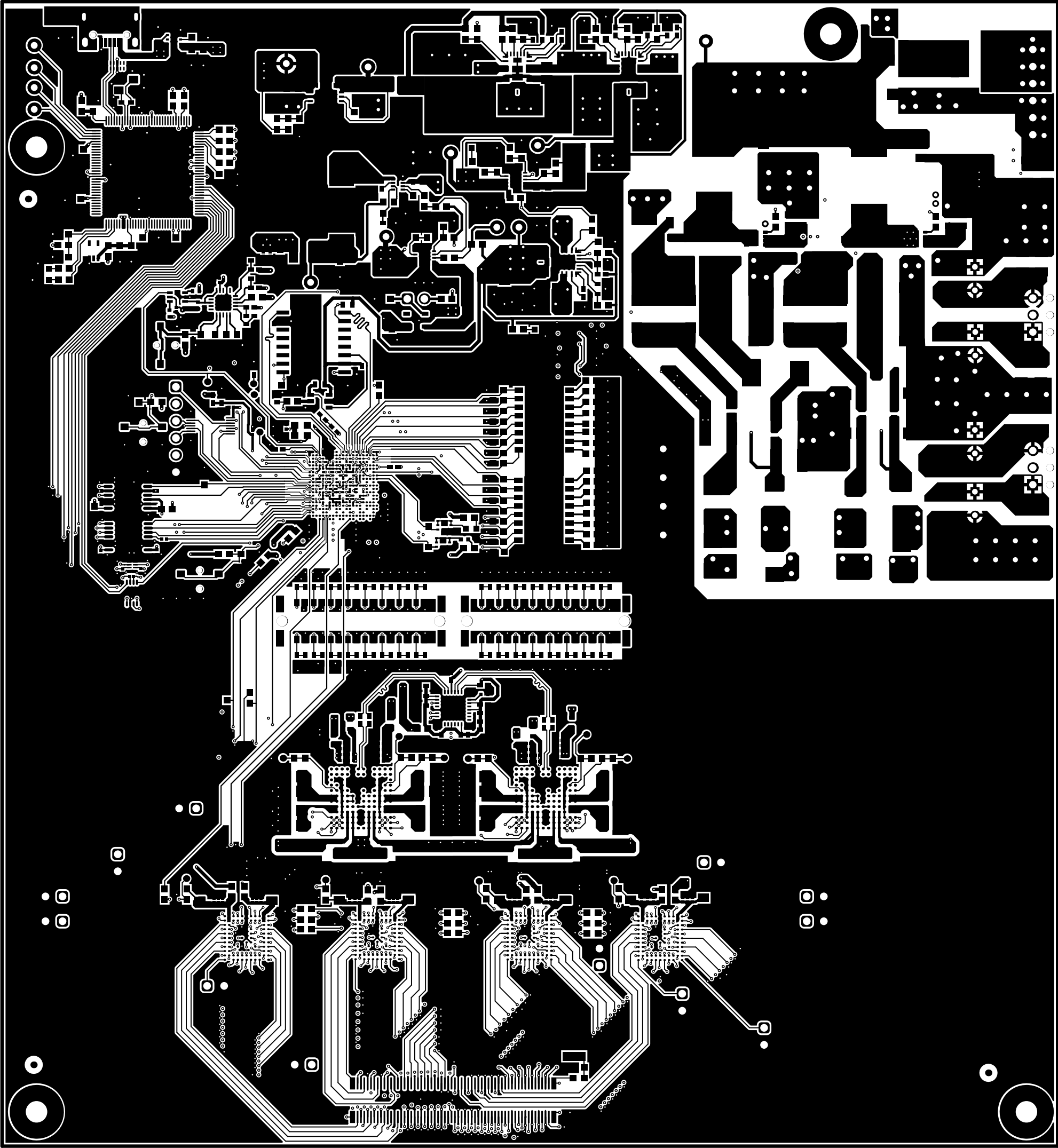


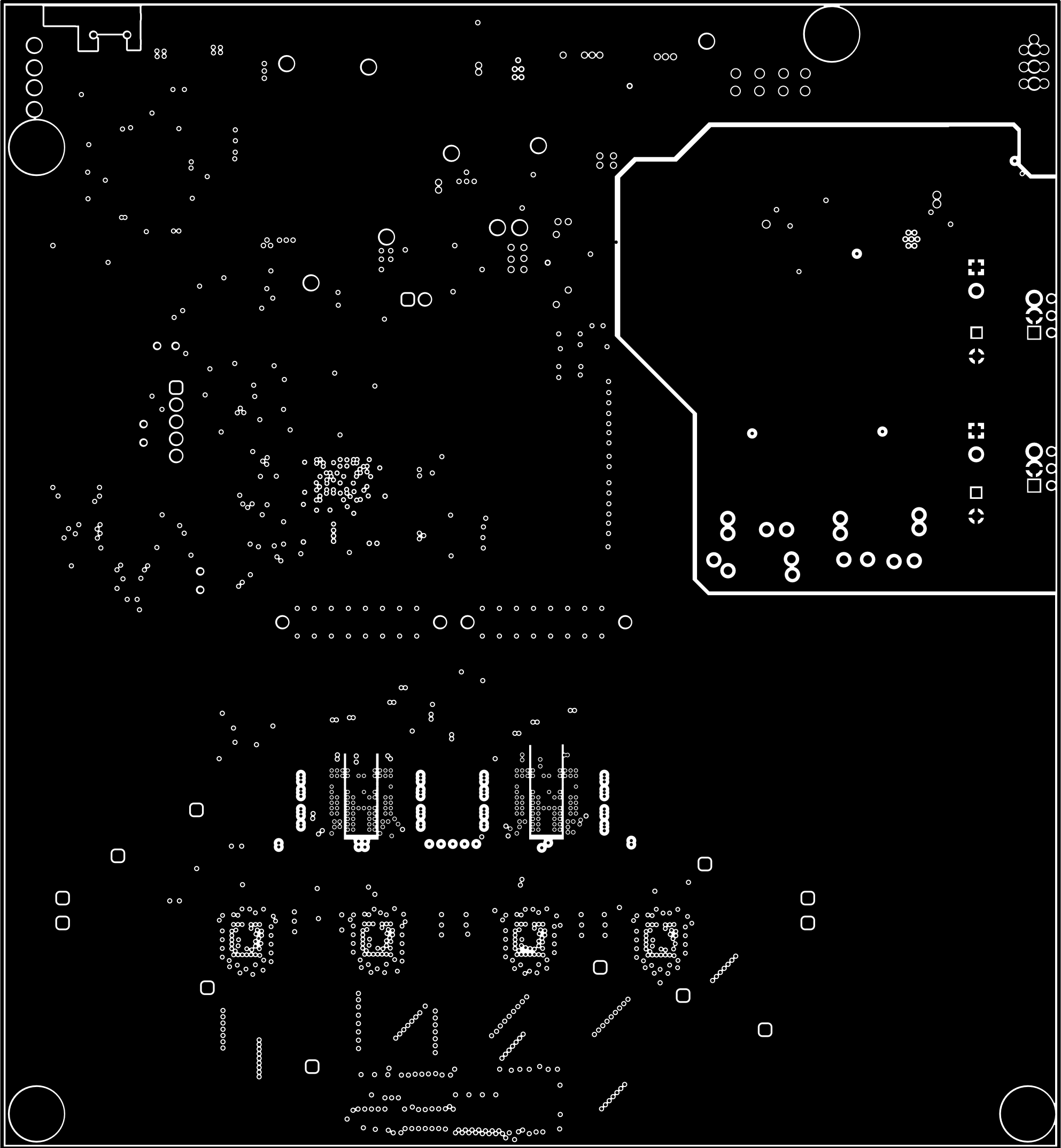
ALL ARTWORK VIEWED FROM TOP SIDE	BOARD #: TIDA-010256	REV: E1	SUN REV: Not in version control
LAYER NAME = Top Overlay	TID #: TIDA-010256		
PLOT NAME = Top Overlay	GENERATED : 3/3/2025 4:17:09 PM	TEXAS INSTRUMENTS	



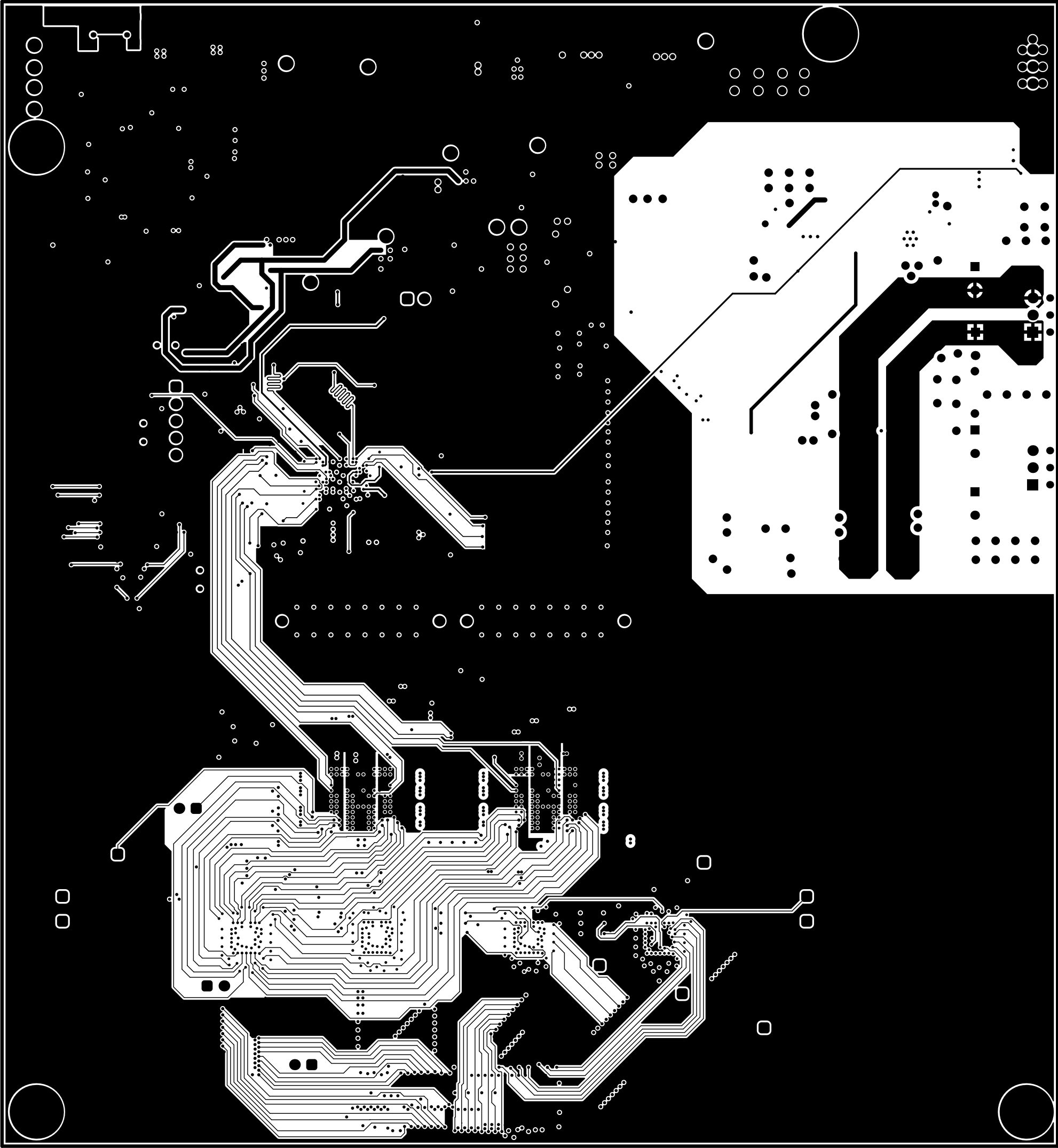
ALL ARTWORK VIEWED FROM TOP SIDE	BOARD #: TIDA-010256	REV: E1	SUN REV: Not in version control
LAYER NAME = Top Solder	TID #: TIDA-010256		
PLOT NAME = Top Solder Mask	GENERATED : 3/3/2025 4:17:09 PM	TEXAS INSTRUMENTS	



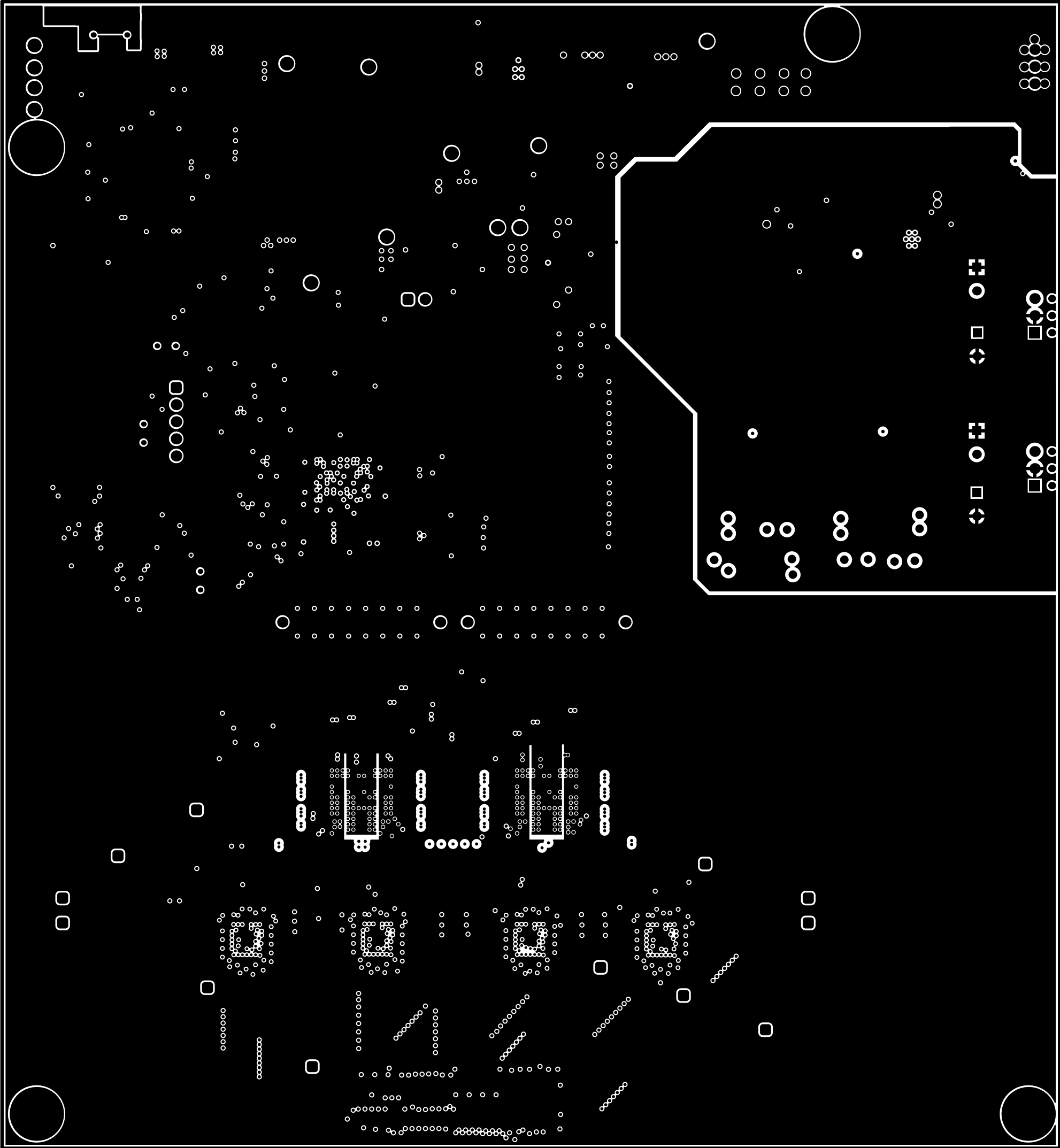
ALL ARTWORK VIEWED FROM TOP SIDE	BOARD #: TIDA-010256	REV: E1	SUN REV: Not in version control
LAYER NAME = Top Layer	TID #: TIDA-010256		
PLOT NAME = Top Layer	GENERATED : 3/3/2025 4:17:09 PM	TEXAS INSTRUMENTS	



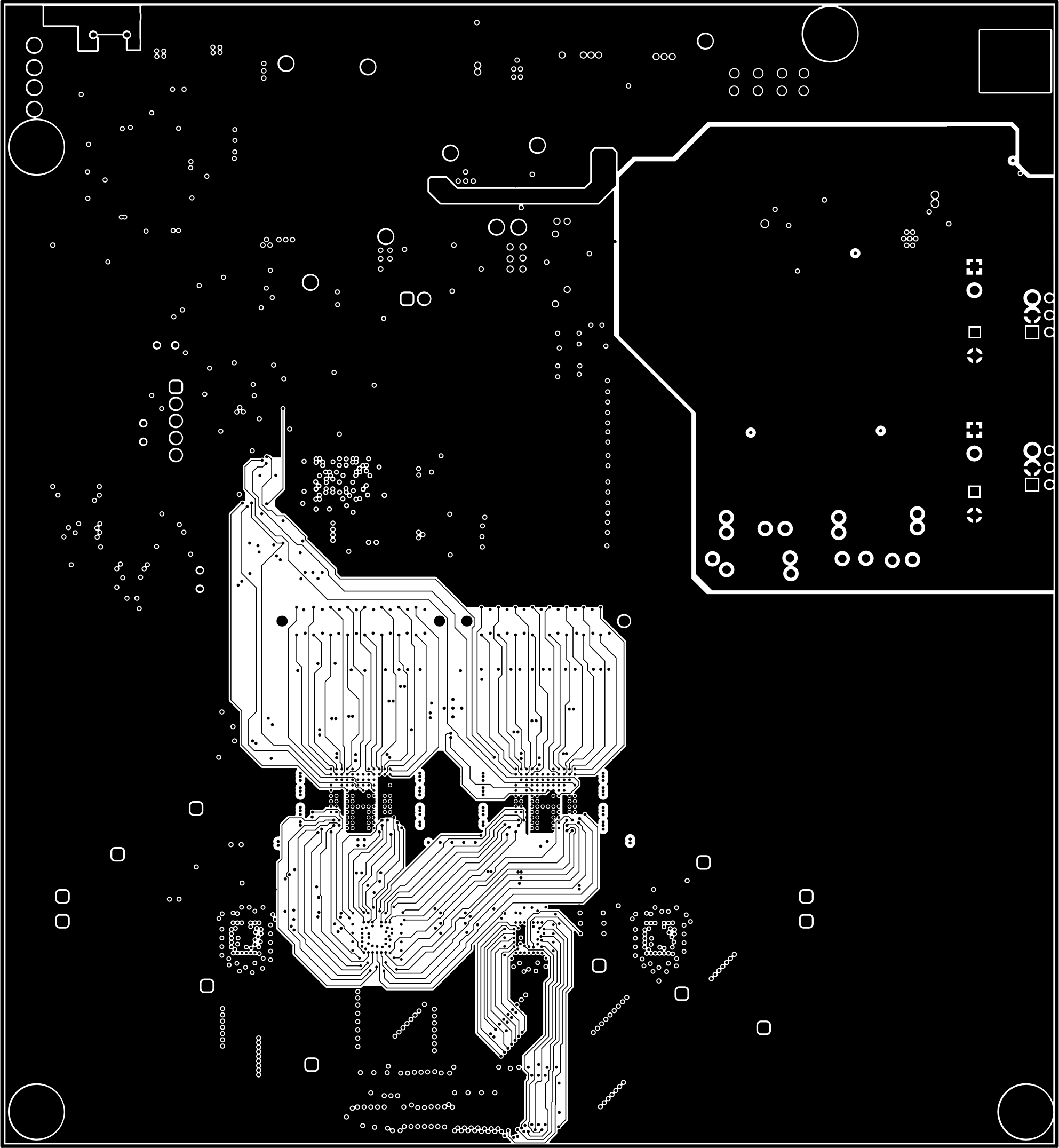
ALL ARTWORK VIEWED FROM TOP SIDE	BOARD #: TIDA-010256	REV: E1	SUN REV: Not in version control
LAYER NAME =	TID #: TIDA-010256		
PLOT NAME = Signal 1	GENERATED : 3/3/2025 4:17:10 PM	TEXAS INSTRUMENTS	



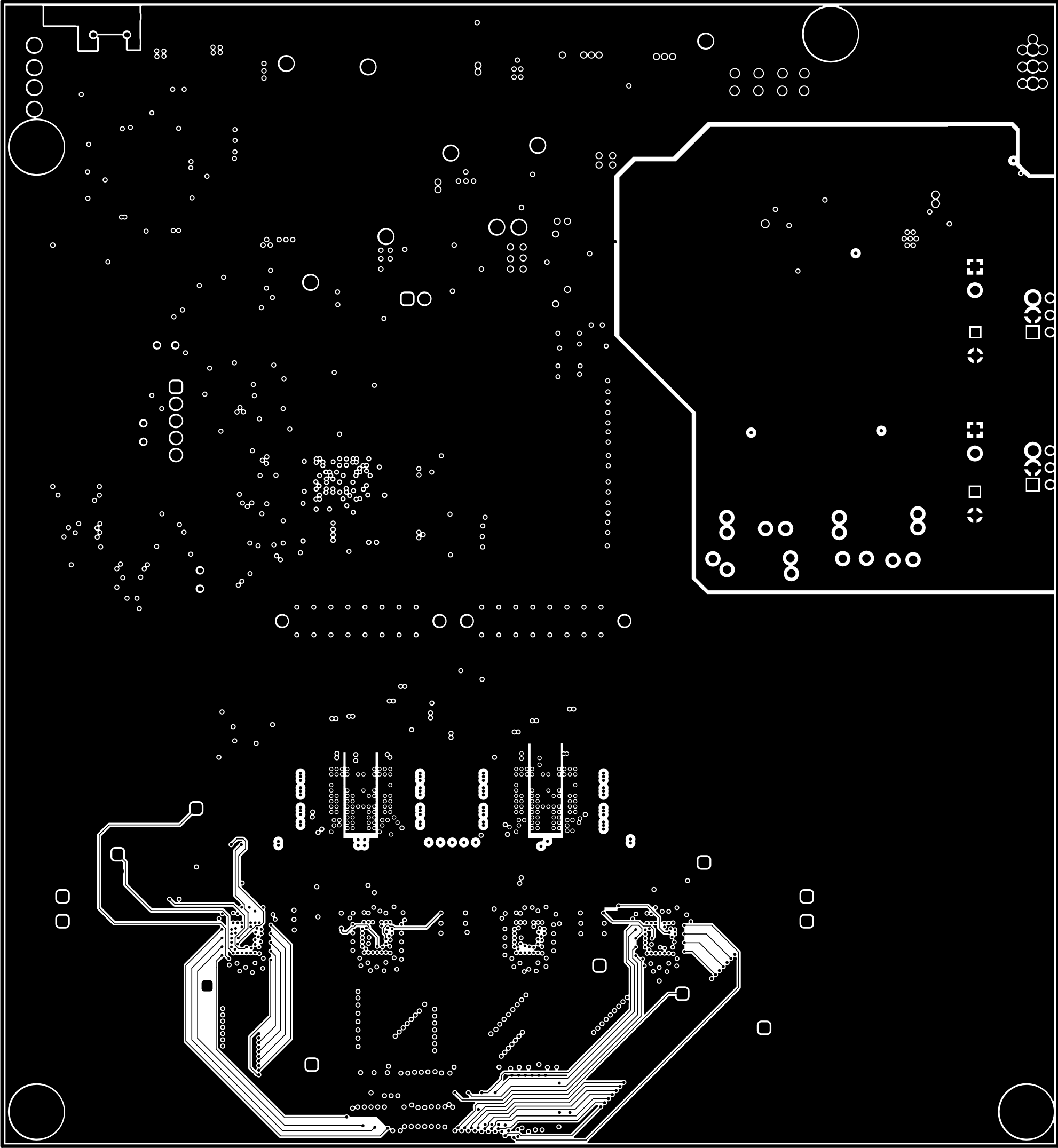
ALL ARTWORK VIEWED FROM TOP SIDE	BOARD #: TIDA-010256	REV: E1	SUN REV: Not in version control
LAYER NAME =	TID #: TIDA-010256		
PLOT NAME = Signal 2	GENERATED : 3/3/2025 4:17:10 PM	TEXAS INSTRUMENTS	



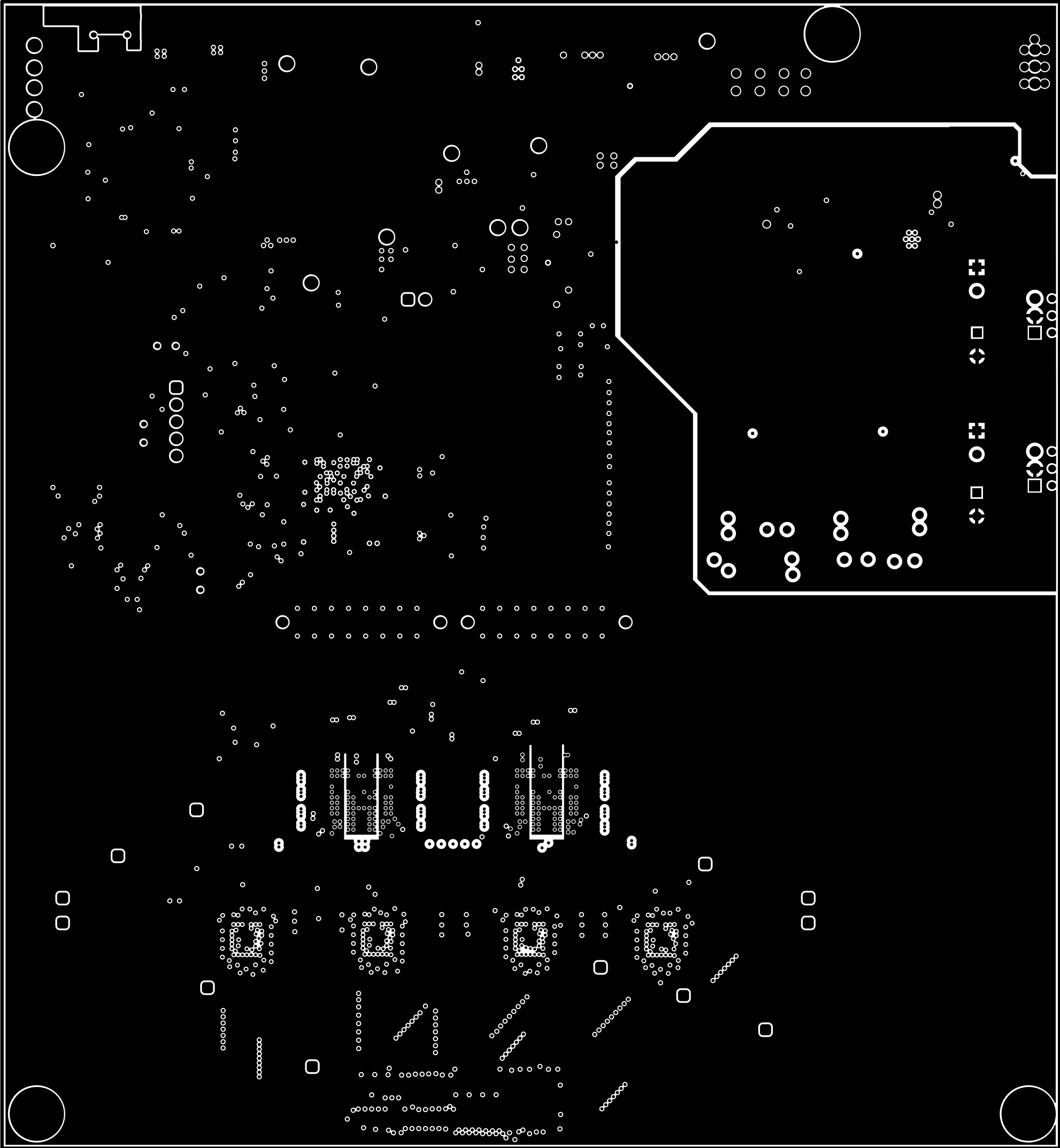
ALL ARTWORK VIEWED FROM TOP SIDE	BOARD #: TIDA-010256	REV: E1	SUN REV: Not in version control
LAYER NAME =	TID #: TIDA-010256		
PLOT NAME = Signal 3	GENERATED : 3/3/2025 4:17:10 PM	TEXAS INSTRUMENTS	



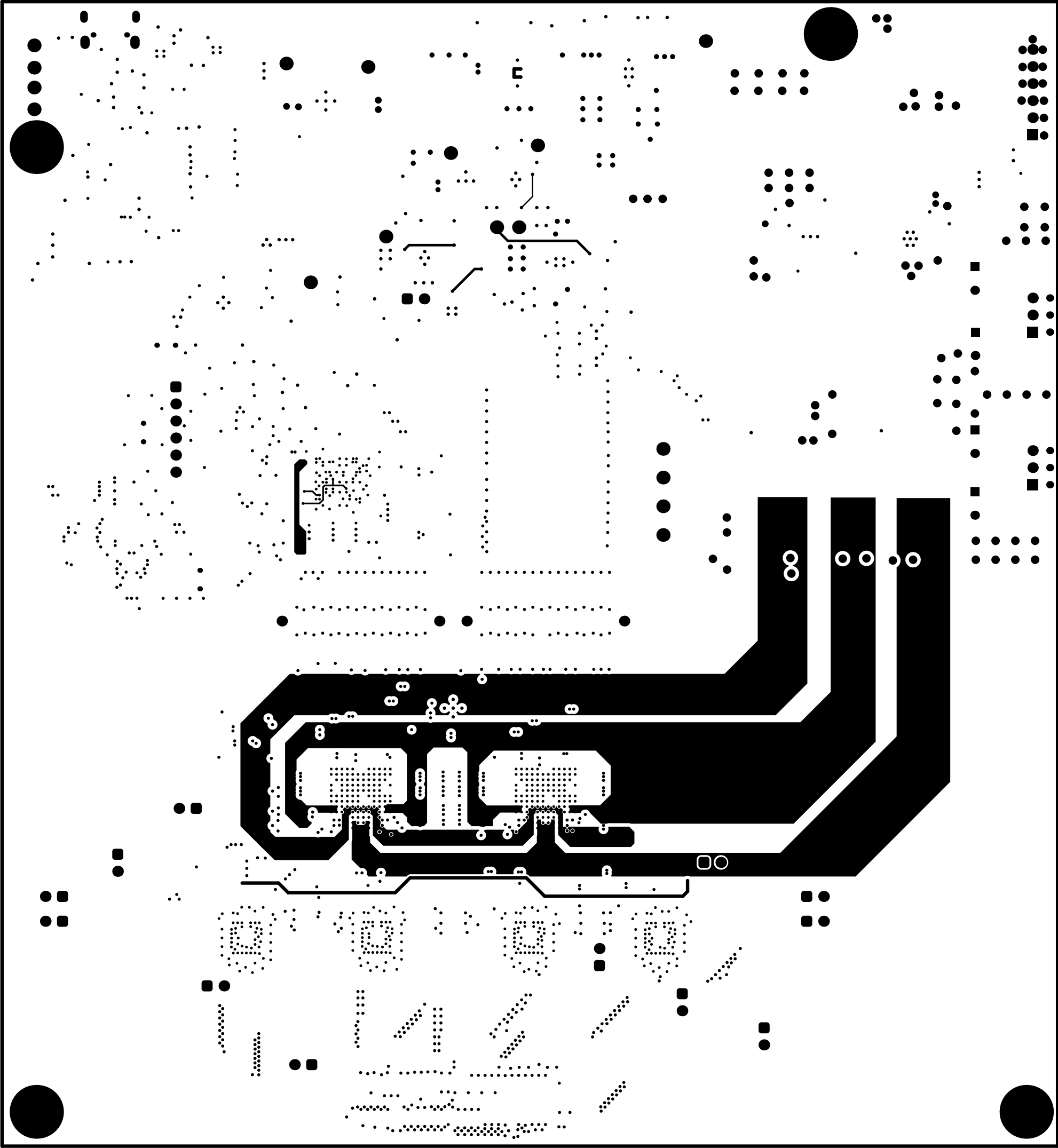
ALL ARTWORK VIEWED FROM TOP SIDE	BOARD #: TIDA-010256	REV: E1	SUN REV: Not in version control
LAYER NAME =	TID #: TIDA-010256		
PLOT NAME = Signal 4	GENERATED : 3/3/2025 4:17:10 PM	TEXAS INSTRUMENTS	



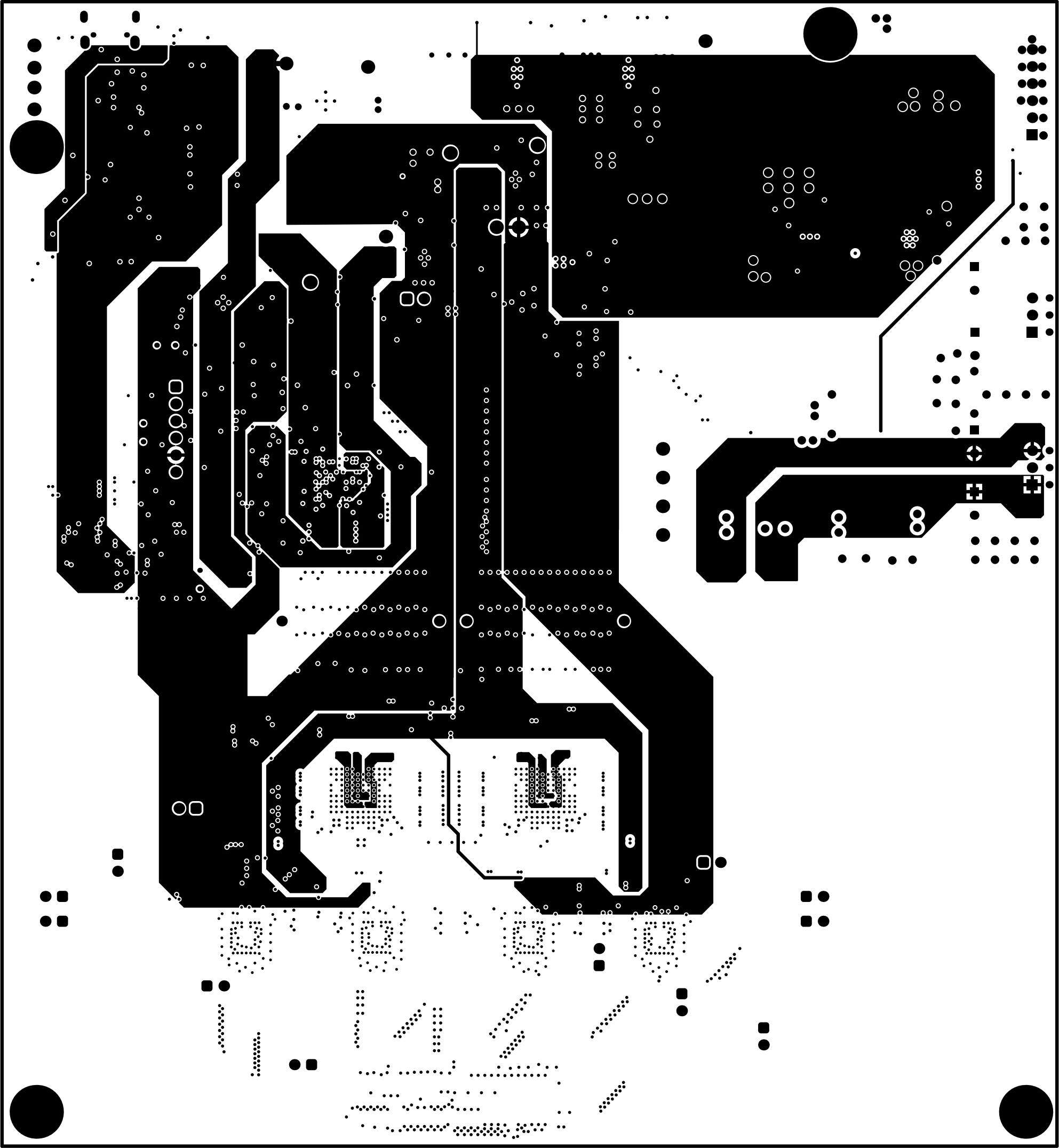
ALL ARTWORK VIEWED FROM TOP SIDE	BOARD #: TIDA-010256	REV: E1	SUN REV: Not in version control
LAYER NAME =	TID #: TIDA-010256		
PLOT NAME = Signal 5	GENERATED : 3/3/2025 4:17:10 PM	TEXAS INSTRUMENTS	



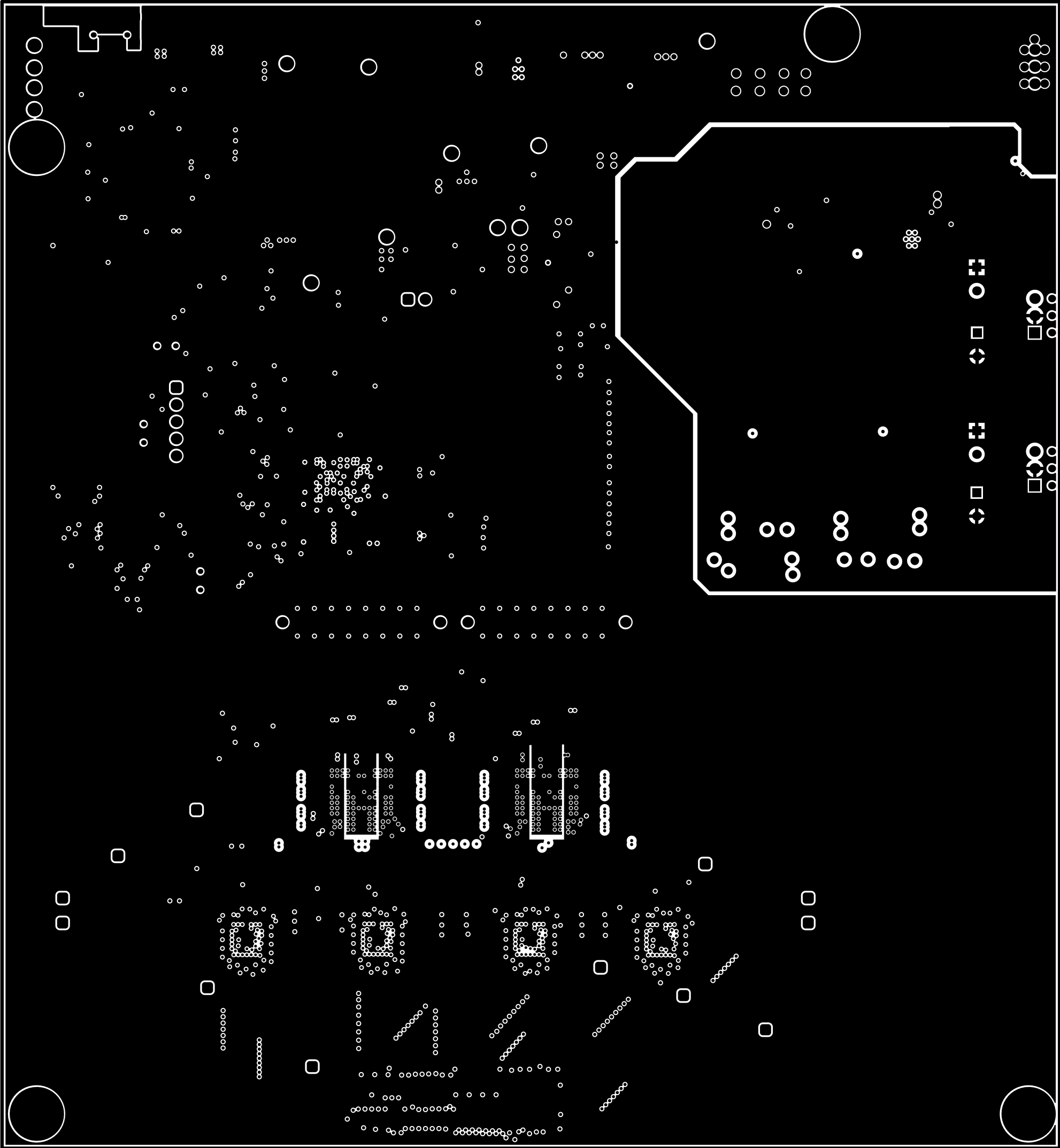
ALL ARTWORK VIEWED FROM TOP SIDE	BOARD #: TIDA-010256	REV: E1	SUN REV: Not in version control
LAYER NAME =	TID #: TIDA-010256		
PLOT NAME = Signal 6	GENERATED : 3/3/2025 4:17:10 PM	TEXAS INSTRUMENTS	



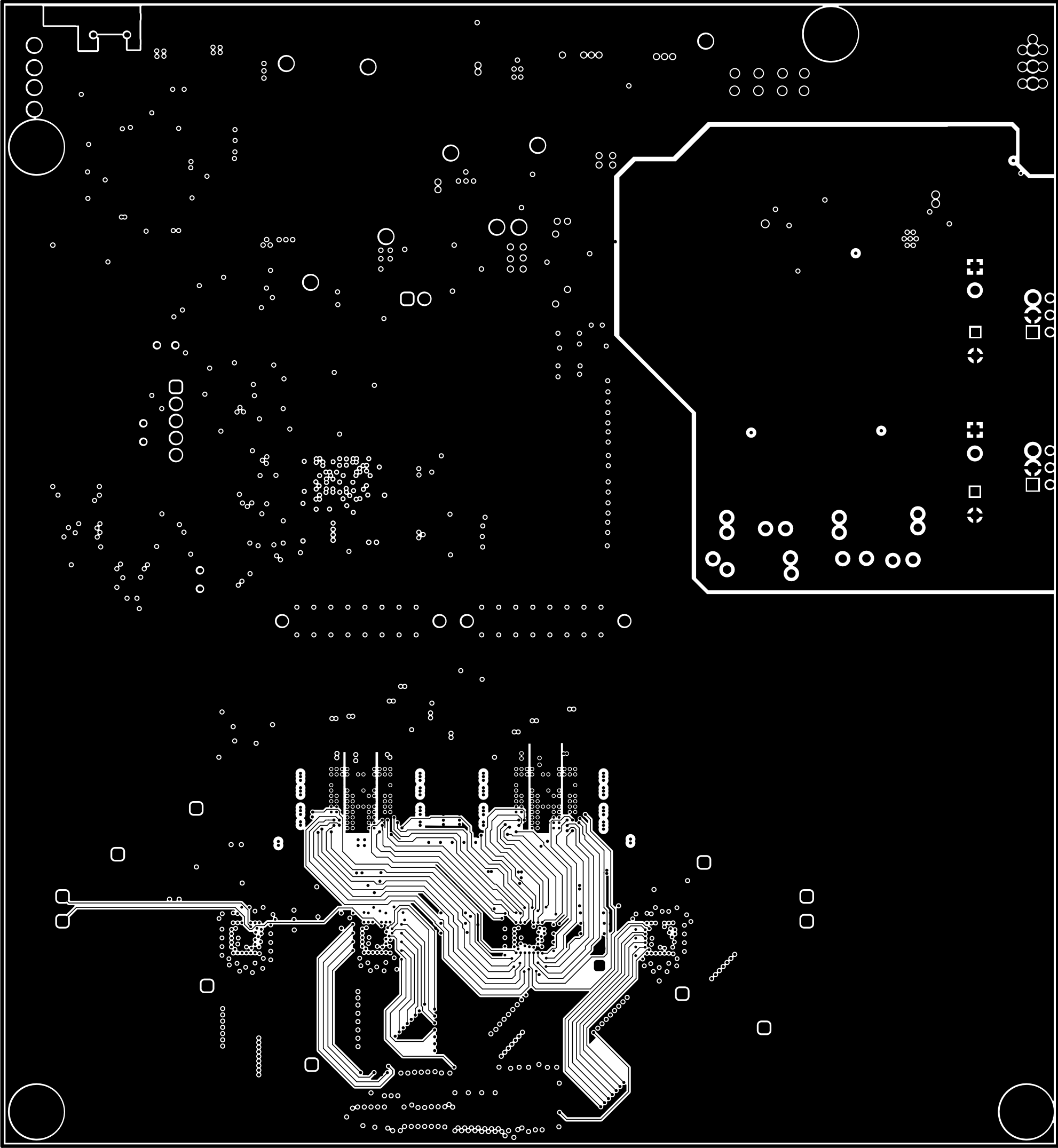
ALL ARTWORK VIEWED FROM TOP SIDE	BOARD #: TIDA-010256	REV: E1	SUN REV: Not in version control
LAYER NAME =	TID #: TIDA-010256		
PLOT NAME = Signal 7	GENERATED : 3/3/2025 4:17:10 PM	TEXAS INSTRUMENTS	



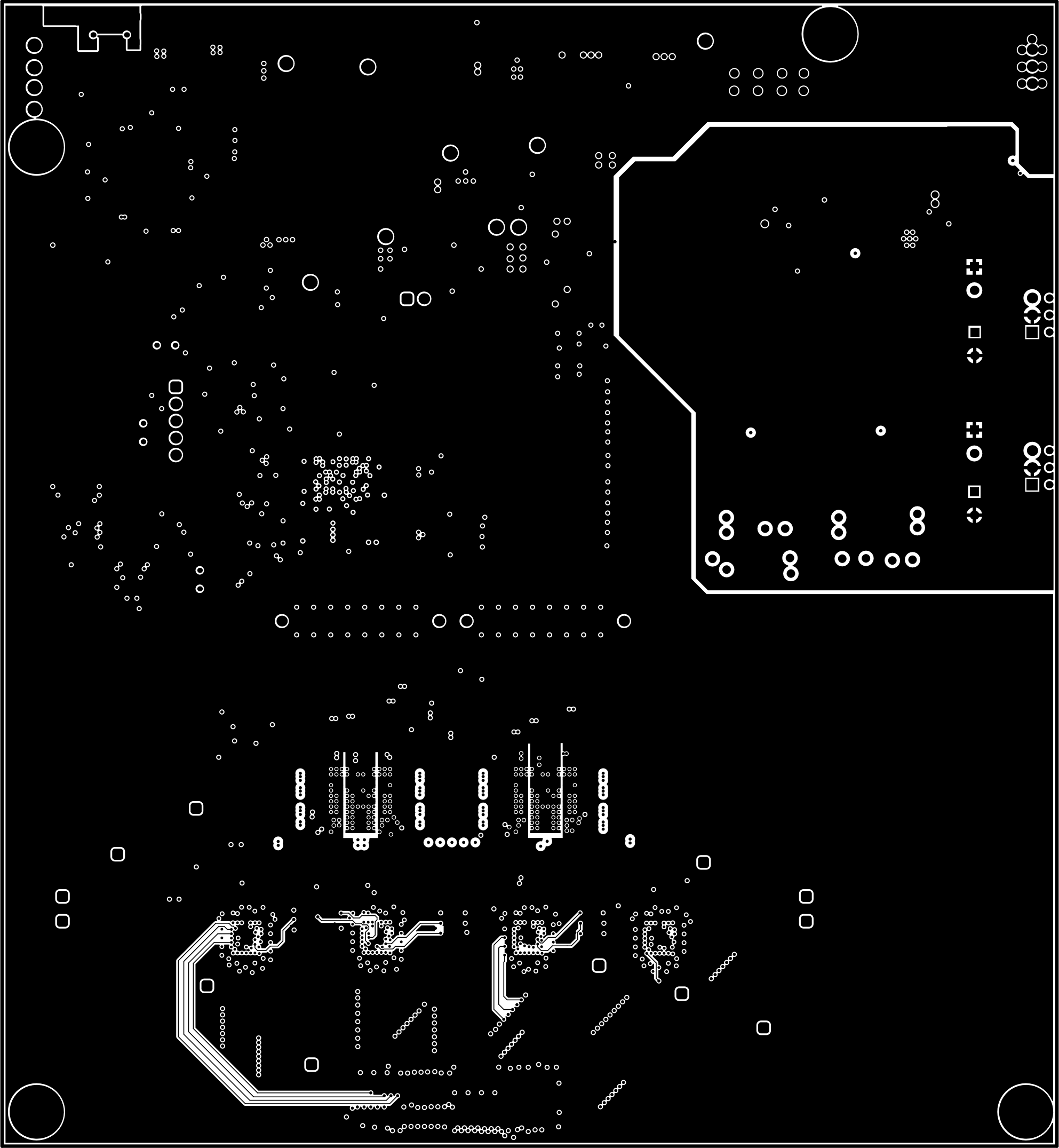
ALL ARTWORK VIEWED FROM TOP SIDE	BOARD #: TIDA-010256	REV: E1	SUN REV: Not in version control
LAYER NAME =	TID #: TIDA-010256		
PLOT NAME = Signal 8	GENERATED : 3/3/2025 4:17:10 PM	TEXAS INSTRUMENTS	



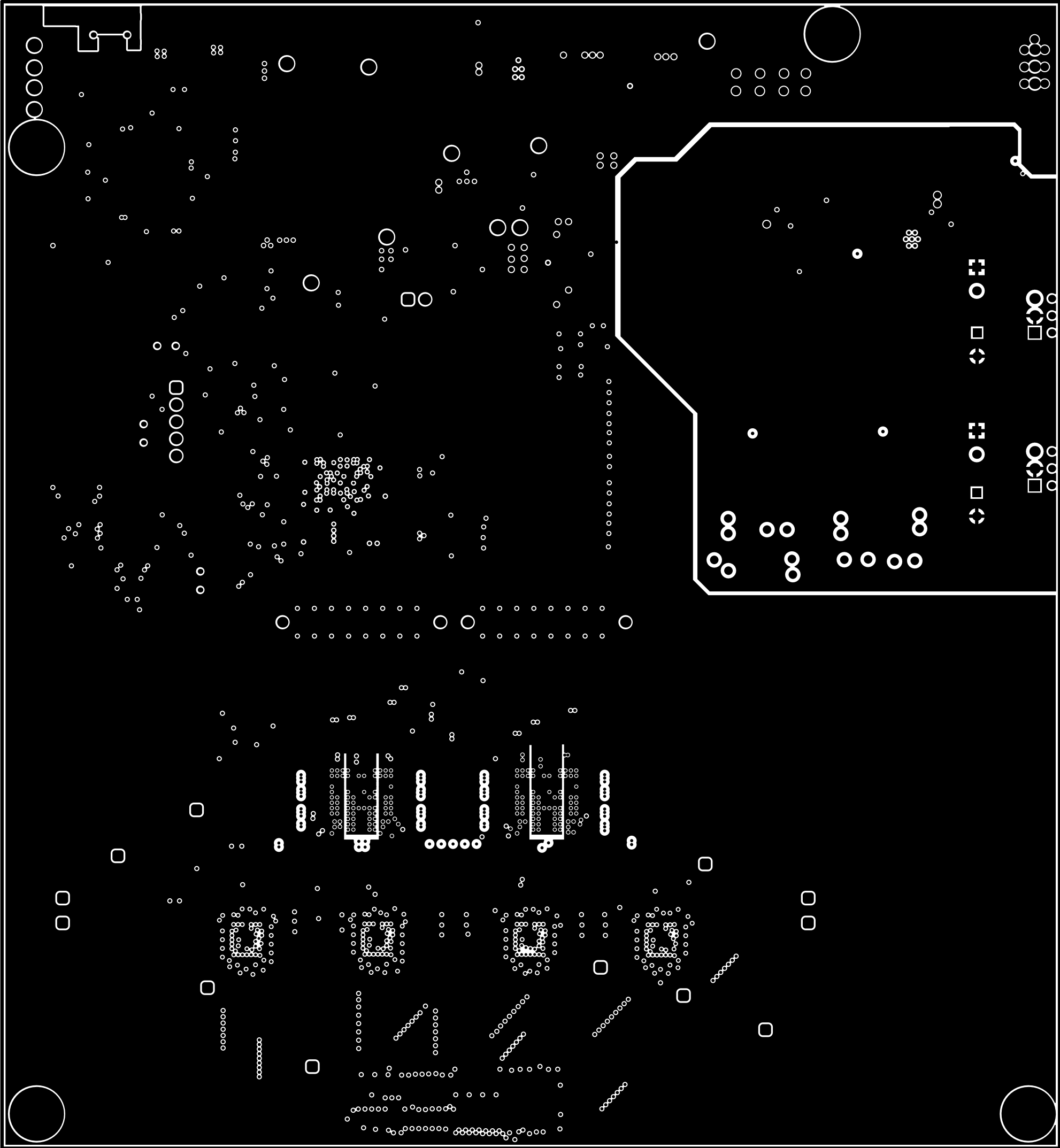
ALL ARTWORK VIEWED FROM TOP SIDE	BOARD #: TIDA-010256	REV: E1	SUN REV: Not in version control
LAYER NAME = M1 Board Outline	TID #: TIDA-010256		
PLOT NAME = Signal 9	GENERATED : 3/3/2025 4:17:10 PM	TEXAS INSTRUMENTS	



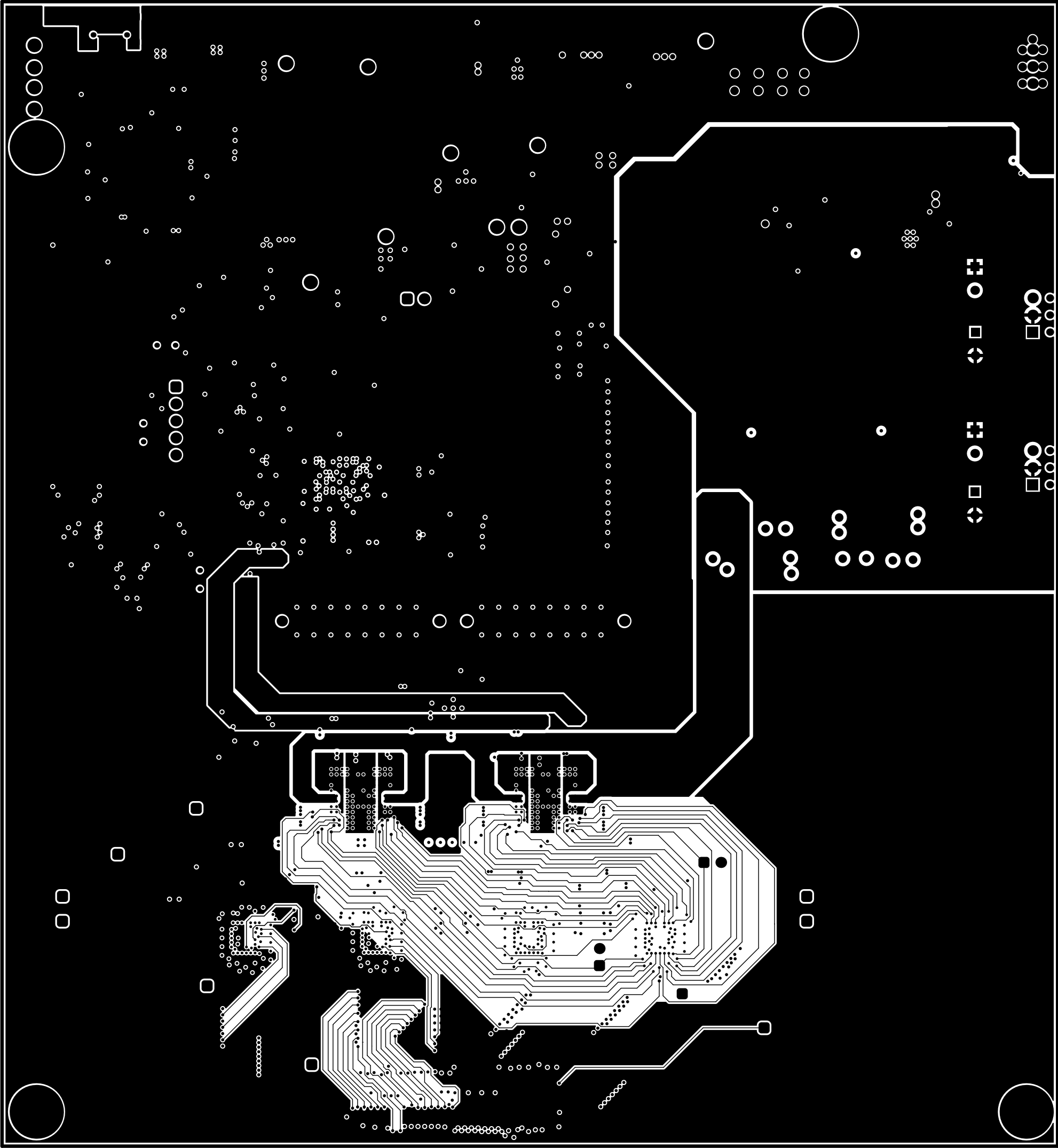
ALL ARTWORK VIEWED FROM TOP SIDE	BOARD #: TIDA-010256	REV: E1	SUN REV: Not in version control
LAYER NAME = M1 Board Outline	TID #: TIDA-010256		
PLOT NAME = Signal 10	GENERATED : 3/3/2025 4:17:10 PM	TEXAS INSTRUMENTS	



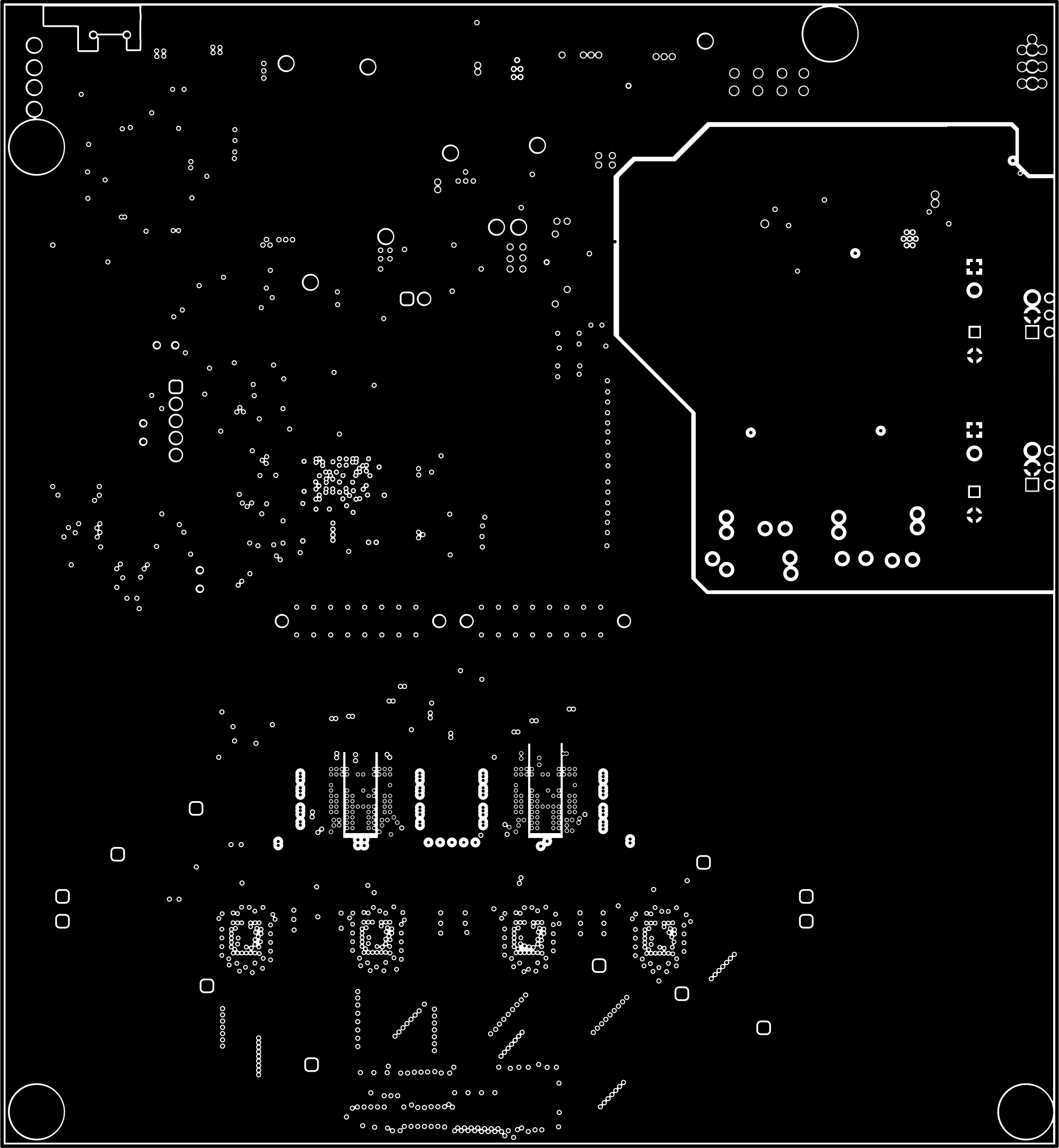
ALL ARTWORK VIEWED FROM TOP SIDE	BOARD #: TIDA-010256	REV: E1	SUN REV: Not in version control
LAYER NAME = M1 Board Outline	TID #: TIDA-010256		
PLOT NAME = Signal 11	GENERATED : 3/3/2025	4:17:10 PM	TEXAS INSTRUMENTS



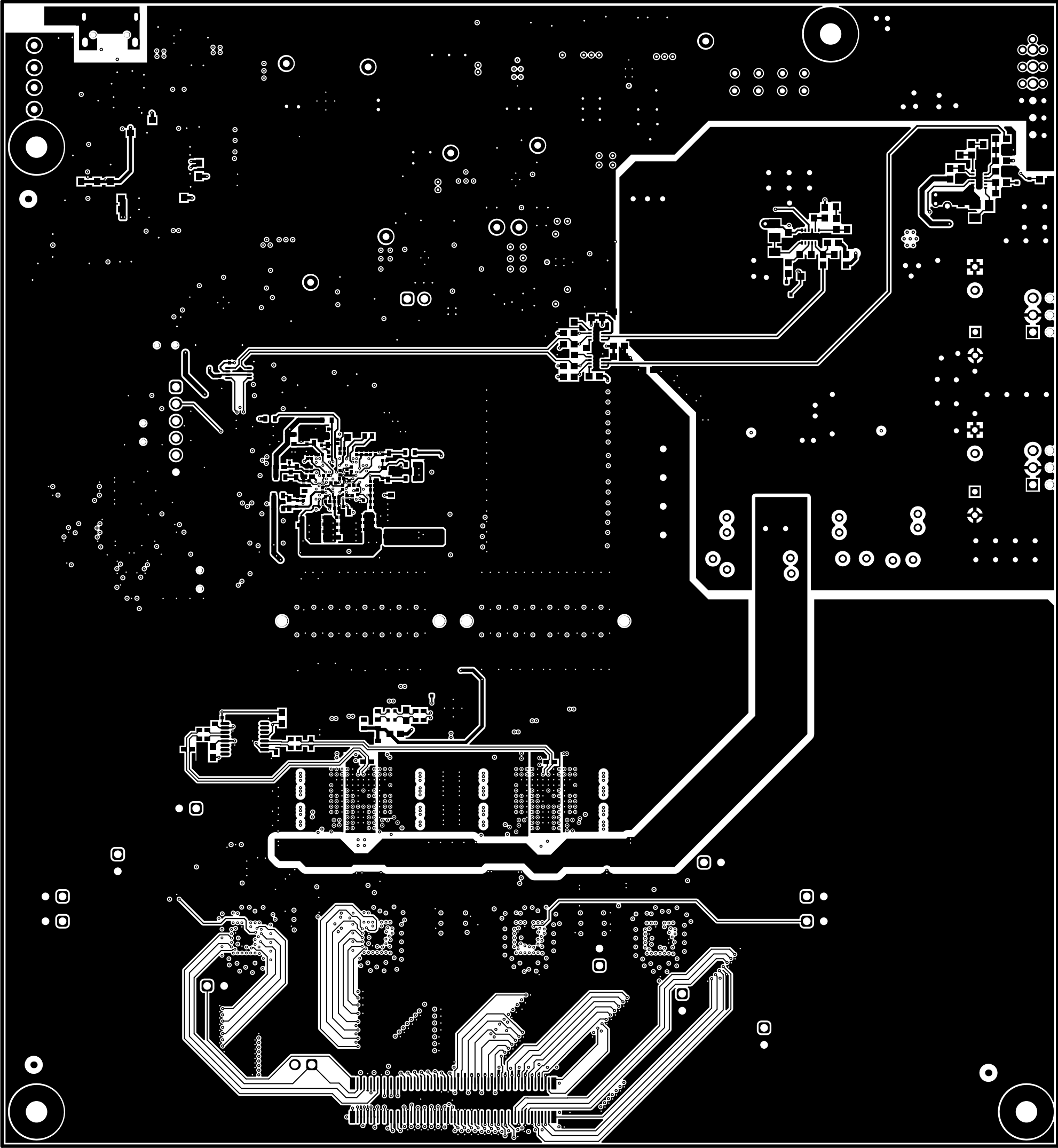
ALL ARTWORK VIEWED FROM TOP SIDE	BOARD #: TIDA-010256	REV: E1	SUN REV: Not in version control
LAYER NAME = M1 Board Outline	TID #: TIDA-010256		
PLOT NAME = Signal 12	GENERATED : 3/3/2025 4:17:10 PM	TEXAS INSTRUMENTS	



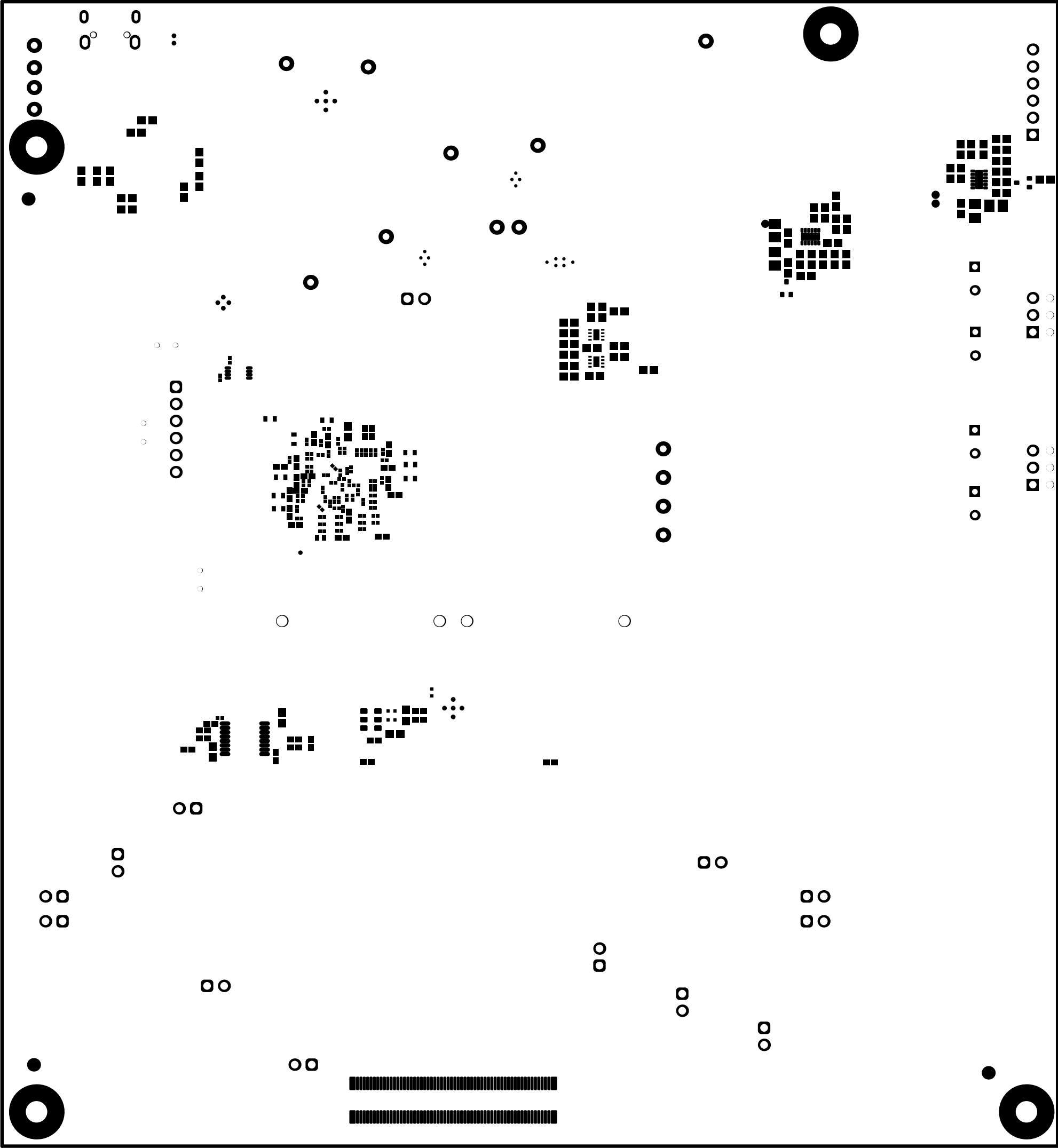
ALL ARTWORK VIEWED FROM TOP SIDE	BOARD #: TIDA-010256	REV: E1	SUN REV: Not in version control
LAYER NAME = M1 Board Outline	TID #: TIDA-010256		
PLOT NAME = Signal 13	GENERATED : 3/3/2025 4:17:10 PM	TEXAS INSTRUMENTS	



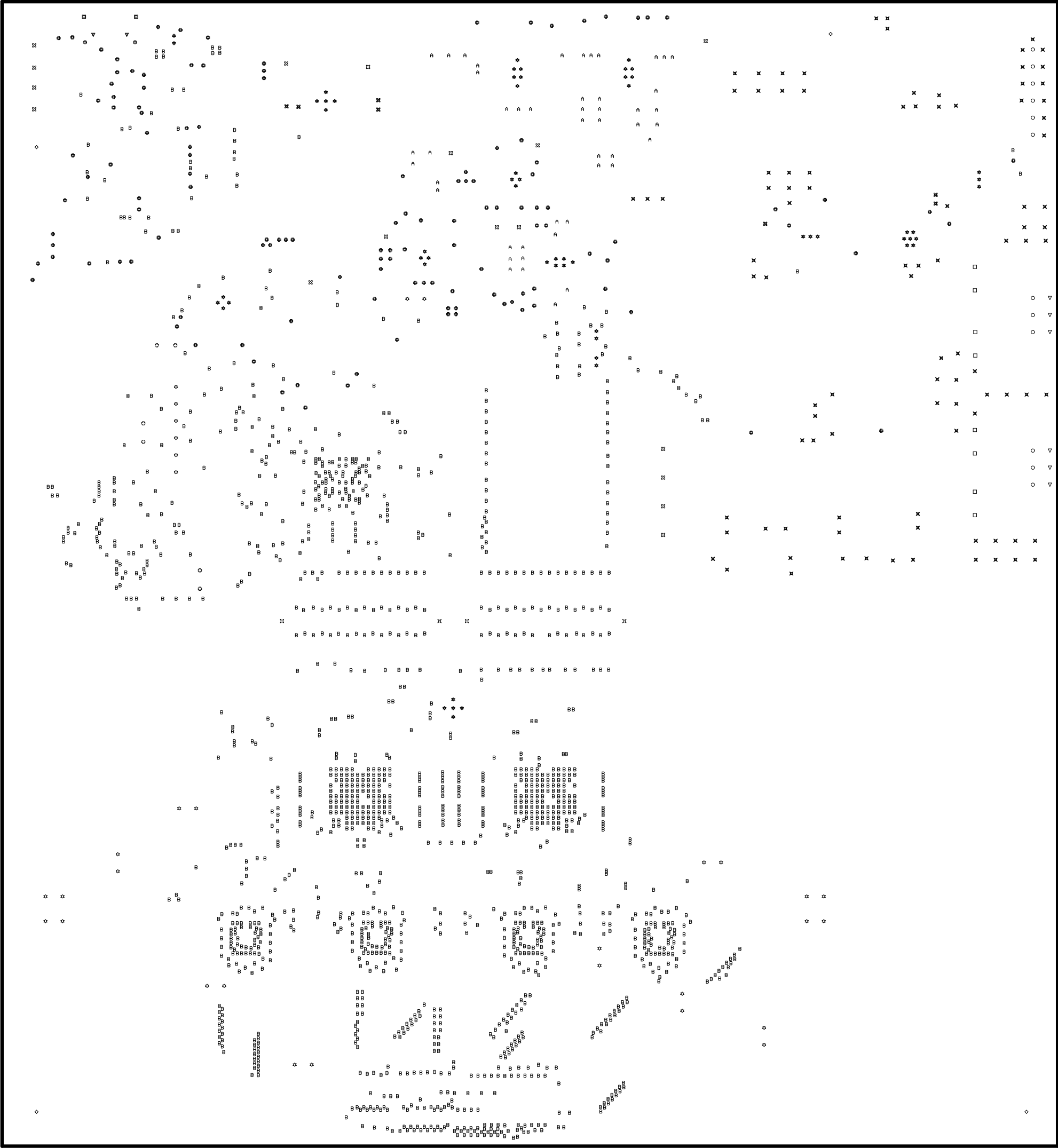
ALL ARTWORK VIEWED FROM TOP SIDE	BOARD #: TIDA-010256	REV: E1	SUN REV: Not in version control
LAYER NAME = M1 Board Outline	TID #: TIDA-010256		
PLOT NAME = Signal 14	GENERATED : 3/3/2025	4:17:10 PM	TEXAS INSTRUMENTS



ALL ARTWORK VIEWED FROM TOP SIDE	BOARD #: TIDA-010256	REV: E1	SUN REV: Not in version control
LAYER NAME = Bottom Layer	TID #: TIDA-010256		
PLOT NAME = Bottom Layer	GENERATED : 3/3/2025 4:17:10 PM	TEXAS INSTRUMENTS	



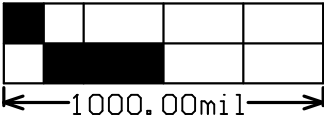
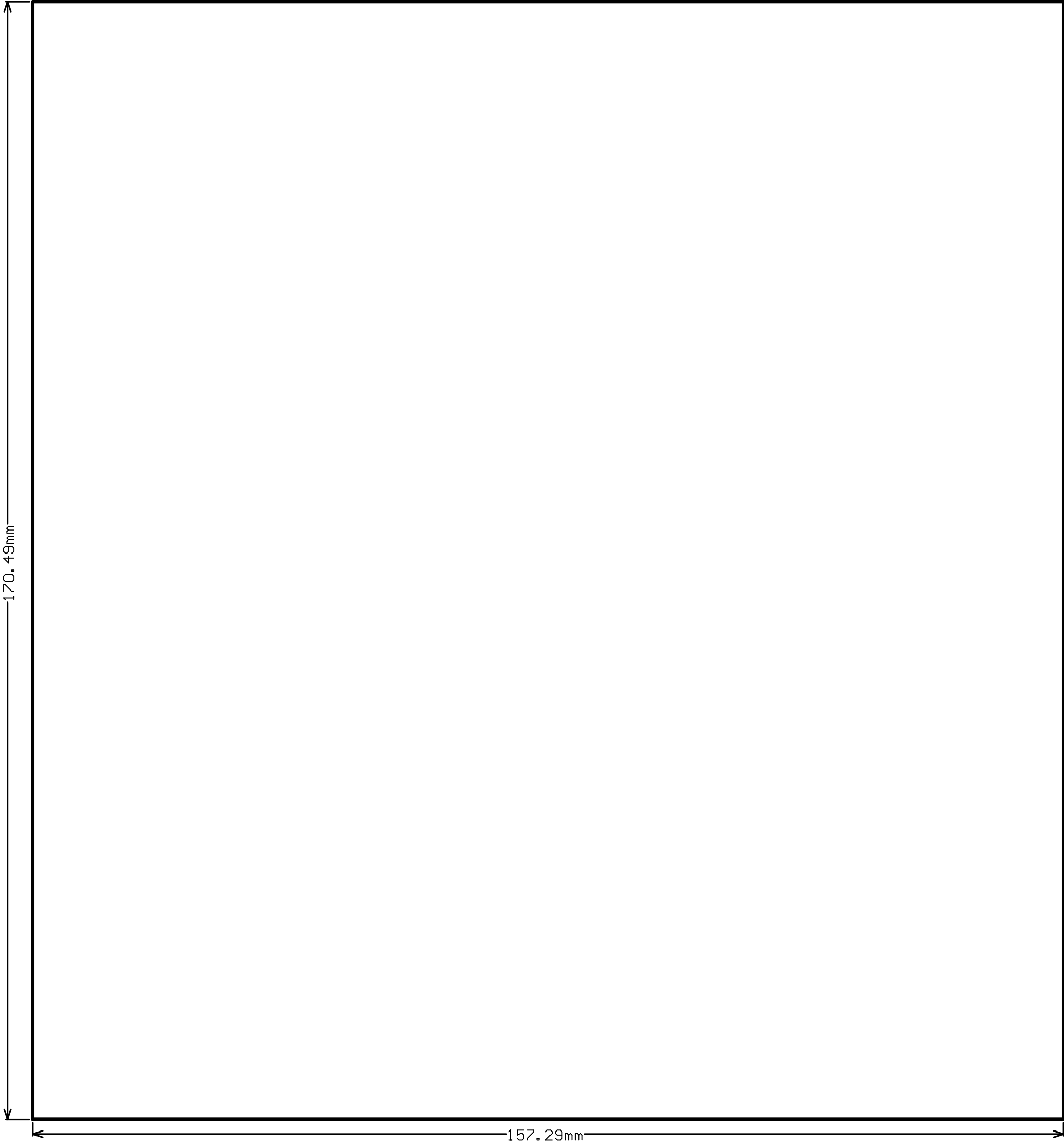
ALL ARTWORK VIEWED FROM TOP SIDE	BOARD #: TIDA-010256	REV: E1	SUN REV: Not in version control
LAYER NAME = Bottom Solder	TID #: TIDA-010256		
PLOT NAME = Bottom Solder Mask	GENERATED : 3/3/2025 4:17:10 PM	TEXAS INSTRUMENTS	



Symbol	Quantity	Finished Hole Size	Plated	Hole Type	Drill Layer Pair	Hole Tolerance
	6	29.53mil (0.750mm)	NPTH	Round	Top Layer - Bottom Layer	
	2	31.50mil (0.800mm)	NPTH	Round	Top Layer - Bottom Layer	
	6	43.31mil (1.100mm)	NPTH	Round	Top Layer - Bottom Layer	
	4	62.99mil (1.600mm)	NPTH	Round	Top Layer - Bottom Layer	
	59	7.87mil (0.200mm)	PTH	Round	Top Layer - Bottom Layer	
	1510	8.00mil (0.203mm)	PTH	Round	Top Layer - Bottom Layer	
	129	10.00mil (0.254mm)	PTH	Round	Top Layer - Bottom Layer	
	47	15.00mil (0.381mm)	PTH	Round	Top Layer - Bottom Layer	
	7	20.00mil (0.508mm)	PTH	Round	Top Layer - Bottom Layer	
	96	30.00mil (0.762mm)	PTH	Round	Top Layer - Bottom Layer	
	8	33.47mil (0.850mm)	PTH	Round	Top Layer - Bottom Layer	
	17	40.00mil (1.016mm)	PTH	Round	Top Layer - Bottom Layer	
	12	43.31mil (1.100mm)	PTH	Round	Top Layer - Bottom Layer	
	32	45.28mil (1.150mm)	PTH	Round	Top Layer - Bottom Layer	
	4	125.98mil (3.200mm)	PTH	Round	Top Layer - Bottom Layer	
	2	21.65mil (0.550mm)	PTH	Slot	Top Layer - Bottom Layer	
	2	33.47mil (0.850mm)	PTH	Slot	Top Layer - Bottom Layer	
	1943 Total					

Slot definitions : Routed Path Length = Calculated from tool start centre position to tool end centre position.
Hole Length = Routed Path Length + Tool Size = Slot length as defined in the PCB layout

ALL ARTWORK VIEWED FROM TOP SIDE	BOARD #: TIDA-010256	REV: E1	SUN REV: Not in version control
LAYER NAME = Drill Drawing	TID #: TIDA-010256		
PLOT NAME = Drill Drawing	GENERATED : 3/3/2025 4:17:11 PM	TEXAS INSTRUMENTS	



ALL ARTWORK VIEWED FROM TOP SIDE	BOARD #: TIDA-010256	REV: E1	SUN REV: Not in version control
LAYER NAME = M2 Board Dimensions	TID #: TIDA-010256		
PLOT NAME = Board Dimensions	GENERATED : 3/3/2025 4:17:12 PM		TEXAS INSTRUMENTS